



**Restaurant
Supply Ltd.**

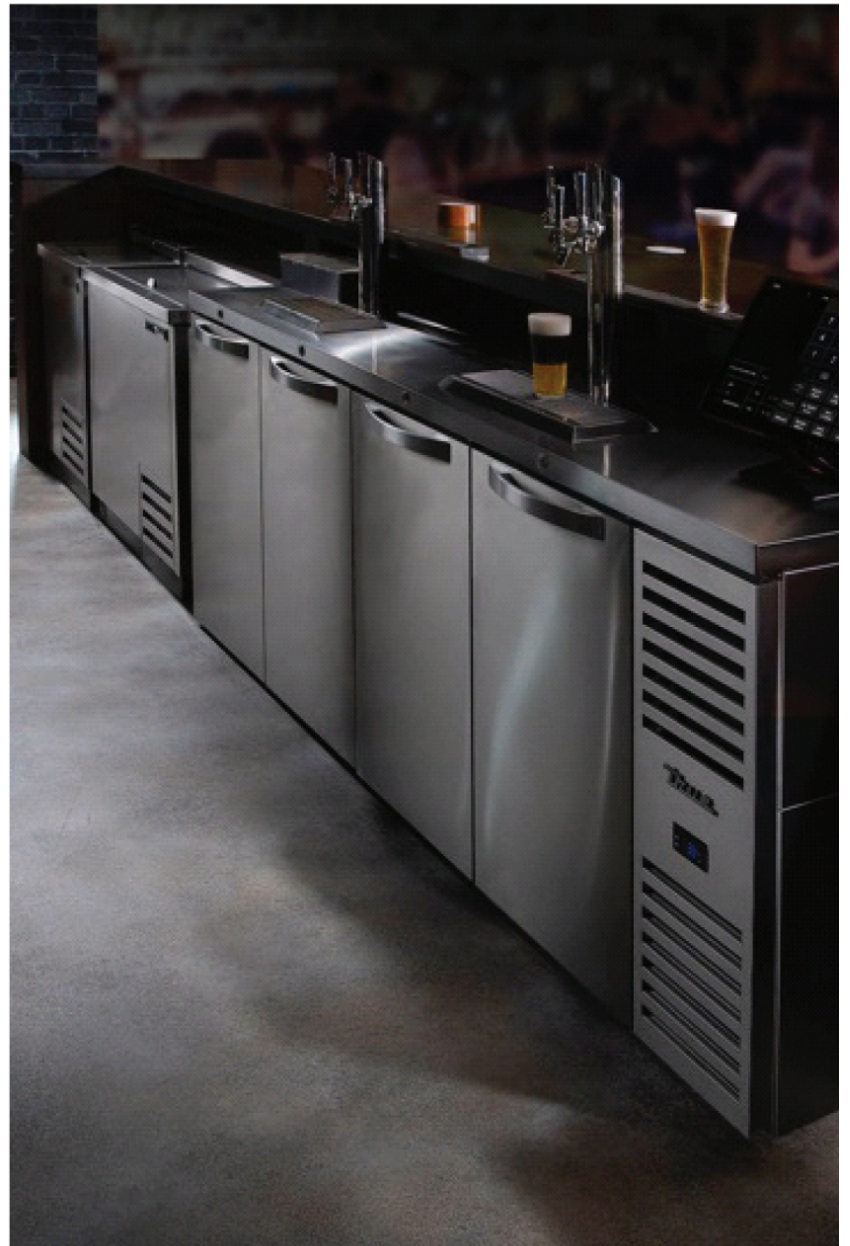


Where Service Meets Quality

Burlington / GTA • Kitchener • Sudbury



Valid:
August 1st to
September 30th



shopatstop.com



Nonic Pub Glass 20oz

810997 Packed in 4dz

\$25.00/dz



Aspen Pilsner 10oz

812703 Packed in 2dz

\$37.00/dz



Aspen Pilsner 20oz

812704 Packed in 2dz

\$55.00/dz



Revival Beer Glass 20oz

917561 Packed in 1dz

\$37.00/dz



Craft Beer 14.5oz

812705 Packed in 1 dz

\$27.00/dz



Pilsner 14oz

812706 Packed in 2dz

\$27.50/dz



Pilsner 18.25oz

812707 Packed in 2dz

\$37.50/dz



Craft Beer Glass 13.75oz

812708 Packed in 1 dz

\$30.00/dz



Craft Beer Glass 16.75oz

812709 Packed in 1 dz

\$45.00/dz



Beer Taster 6.75oz

812710 Packed in 4dz

\$15.00/dz

Triple Head Glass Washer

807270

\$ 22.00

Bar Glass Washer
Triple Head: (2) 6-1/2" And (1) 8"
Plastic Suction Base
Nylon Brush



Dome Condiment Caddy

800462

\$95.00

san jamar®
smart. safe. sanitary.



Versatile and convenient Dome® Condiment Centers feature a patented domed-lid that rotates back for easy access and allows increased capacity when closed. NSF-certified and completely dishwasher safe, the Dome® is available in a wide array of configurations with standard and deep trays. Deep trays allow high-capacity use while standard trays leave room for ice or EZ-Chill™ re-freezable ice packs to keep garnishes chilled. Tray inserts can be pre-filled and stored in a cooler until needed. The Dome® is the perfect, portable cold-holding solution for hot dog concessions; also great for ice cream topping bars and more.



Small Cheese/ Serving Board

810787

\$35.00

Large Cheese/ Serving Board

810790

\$90.00

Medium Cheese/ Serving Board

810789

\$60.00

XL Chesse/ Serving Board

810791

\$110.00

ONEIDA®



Teaspoon Stiletto

811996

\$139.00/3dz



Soup Spoon Stiletto

811997

\$185.00/3dz



Dinner Knife Stiletto

811998

\$249.00/3dz



Fork Stiletto

811999

\$249.00/ 3dz

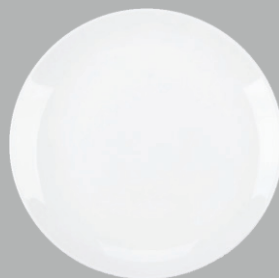
Complete your table setting with this dramatic Oneida Stiletto 18/10 stainless steel extra heavy weight cutlery. Combining an angular tapered handle with clean smooth lines, the Stiletto line adds an eye-catching and modern look to dining areas. Its satin finish offers a polished, professional appearance and also conceals finger prints. Plus, thanks to its 18/10 stainless steel construction, you can rest assured that your investment is protected from staining associated with acidic foods and cleaning chemicals.



**Coupe Plate
6 3/8" Round**

811945 Packed in 3dz

\$49.54/dz



**Coupe Plate
8 1/4" Round**

811946 Packed in 3 dz

\$79.00/dz



**Coupe Plate
11" Round**

811947

\$199.00/dz



Oval Bowl 9.5oz

811950 Packed in 3dz

\$99.00/dz



Rice Bowl 9oz

811949 Packed in 3 dz

\$59.00/dz

Oneida Fusion bright white porcelain coupe plates are great for serving a wide variety of foods in your ethnic or traditional restaurant. The bright white color of this plate will add an air of sophistication to your tabletop display while also ensuring your best foods stand out. Using steep angles and a rounded design, this Fusion plate with an East style is designed to enhance the overall look of your international dishes. With many traditional Asian dinnerware pieces included in the line, it is great for adding authentic Asian foods to your tabletop so you can create a custom mix of international cuisines that guests are sure to love. Great for serving side salads or fresh bread and butter, this plate is a must-have addition to your dinnerware collection.



8oz Porcelain Pedestal Bowl Black Leather

811962 Packed in 4dz

\$69.00/dz



13.5oz Porcelain Pedestal Bowl Black Leather

811963 Packed in 3 dz

\$95.00/dz

Oneida's Leather line endeavors to be different, boasting a worn and rustic appearance and feel. Great for serving small salads or freshly baked breads and rolls, this piece was designed to enhance your dining service and create a memorable experience for your guests. It's also oven safe up to 325 degrees Fahrenheit, making it perfect for warming applications.

Made of highly durable, fully vitrified porcelain, this coupe plate resists moisture absorption, delivering exceptional quality to back its stunning visual appeal. It is also chip-resistant, ensuring years of dependable use in your restaurant, bar, or hotel.

ONEIDA®

Coupe Plate 6 1/8" Porcelain Black Leather

811767 Packed in 4 dz

\$75.00/dz



Coupe Plate 10 3/4" Porcelain Black Leather

811768 Packed in 2 dz

\$199.00/dz





Taylor Colour Coded Thermometers

824522

\$49.99

Thermometers are essential to maintaining the freshness of food in the refrigerator. This applies to both industrial, business, and household usage. When storing meat, fish, and poultry in a freezer, it's important to know at which specific temperatures they need to be maintained in. Products that are kept in a freezer require conditions that prevent bacterial growth. Oftentimes, these temperatures need to prevent the food products from freezing as well. Preciseness is vital in order to ensure that the food doesn't spoil or deteriorate in quality. Another important factor in the food preparation process is color coding. This technique saves tons of time and speeds up the food preparation process by tenfold. These color coded thermometers accurately represent and clearly label the various types of food that's being prepared in the kitchen. They accurately measure between temperatures of 0 degrees Fahrenheit to 330 degrees Fahrenheit and -10 degrees Celsius and 100 degrees Celsius. Moreover, using color coded thermometers aid in preventing cross contamination. Their stainless steel stems and shatterproof lenses are durable and easy to use. Furthermore, these thermometers come with pocket sleeves with patented built in calibration features and are NSF listed



7" Aluminum Fry Pan

811313

\$11.99



- ◆ Eclipse Coated Non-Stick
- ◆ Tough And Durable
- ◆ Made To Last!
- ◆ Superior Heat Conductivity
- ◆ Luxurious Polished Surface

8" Frying Pan Non Stick

808525

\$19.00

10" Frying Pan Non Stick

808526

\$28.00

14" Frying Pan Non Stick

811349

\$45.00



COMBI OVEN PANS



812697

Thermalloy Combi Roast Pan Full Size

0.75" deep | Granite enamel steel 20 Gauge high heat resistance of 350C/662F dishwasher safe

\$35.99

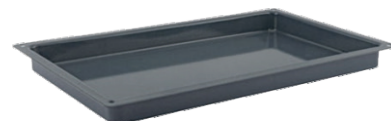


919766

Thermalloy Combi Roast Pan Full Size

1.5" deep, granite enamel steel 20 Gauge high heat resistance of 350C/662F dishwasher safe

\$39.99



812698

Thermalloy Combi Roast Pan Full Size

2.5" deep, granite enamel steel 20 gauge, high heat resistance of 350C/662F dishwasher safe

\$49.99

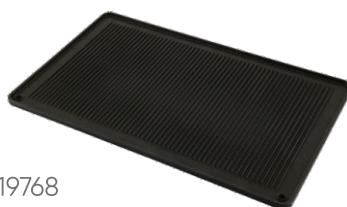


920021

Thermalloy Combi Crisping/Fry Tray Full Size

1.5" deep, wire mesh s/s, small gauge stainless steel wiring, high heat resistance of 350C/662F, dishwasher safe

\$39.99



919768

Thermalloy Combi Grill/Pizza Tray Full Size

Non stick aluminum. Cast aluminum, polyflon non stick finish, high heat resistance of 300C/575F

\$89.99



812699

Thermalloy Combi Grill Tray Full Size

Non stick aluminum. Cast aluminum, polyflon non stick finish. High heat resistance of 300C/575F

\$75.99



812700

Thermalloy Combi 8 Section Baker Full Size

Non stick aluminum 16 gauge aluminum poly flon non stick finish. High heat resistance of 300C/575F

\$49.99

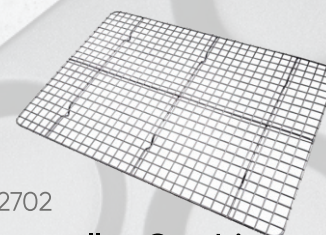


812701

Thermalloy Combi Baking Tray Full Size

Non stick aluminum, 16 gauge aluminum Polyflon non stick finish. High heat resistance of 300C/575F

\$49.99



812702

Thermalloy Combi Wire Grid

Stainless steel electro plated finish dishwasher safe

\$29.99

Special Order



Rational B608106.12 Self Cooking Center XS 6-2/3 E Single Half Size Electric Combi Oven!

825378

Contact Your Rep Today

Whether you want to cook, steam, proof, or rethermalize, making a wide variety of food within a single unit has never been easier than with the space-saving Rational B608106.12 SelfCookingCenter XS 6-2/3 combi oven. This impressive unit boasts all of the features of the full-size unit in a package that's 60% smaller, and it's the only combi this compact with its own steam generator! When combined with its compact, half size design, such versatility makes even the smallest kitchens capable of offering a diverse menu and delicious, high quality output with the convenience of up-to-date technology. Plus, all it requires for operation is a 208/240V, 3 phase electrical connection.

This oven can accommodate up to (6) 2/3 size, 11 1/2" deep or (4) 2/3 size, 2 1/2" deep food pans, the oven boasts an excellent cooking capacity in its space-saving half size. A swiveling hinging rack is included too, but is removable to best suit your evolving needs.



Rubbermaid Foam Soap Dispenser

805982

\$49.00

The AutoFoam Dispenser is a touch-free, wall-mounted system that dispenses controlled amounts of foam soap or sanitizer automatically to help prevent the spread of germs.

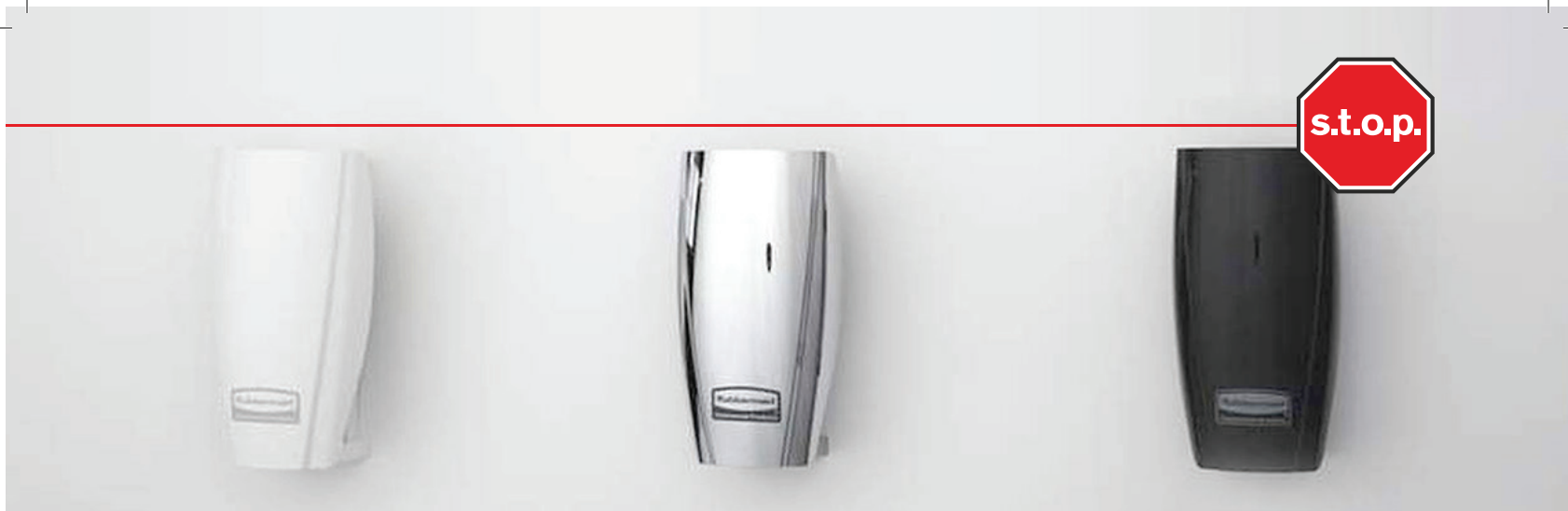
Rubbermaid AutoFoam Refill, Enriched Foam Moisturizing Hand Soap, 1100ml

805981

\$37.50

The Enriched Foam Moisturizing Hand Soap refill is for use in the AutoFoam and AutoFoam with LumeCel™ Technology Dispensers. The Green Seal® Certified hand soap dispenses in a light, airy consistency that lathers quickly for an easy hand wash. High capacity refill delivers up to 2,750 hand washes. Dispenses in a light, airy consistency, enriched with skin conditioner to leave hands feeling soft. Hygienically sealed refills eliminate potential contamination.





T-Cell Dispenser

809278

\$7.50

The Rubbermaid Commercial TCell™ is an odor control system that utilizes advanced fuel cell technology to deliver a precise, timed dose of high-quality fragrance for up to 60 days. T-Cell requires no batteries and operates silently. Covers areas up to 6,000 cubic feet.



T-Cell Mango Scent

805936

\$16.00



T-Cell Cucumber Melon Scent

805937

\$16.00



T-Cell Apple Cinnamon

805938

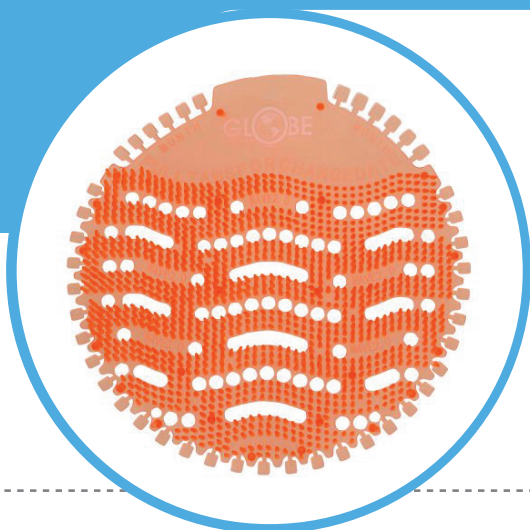
\$16.00



T-Cell Crystal Breeze

805939

\$16.00



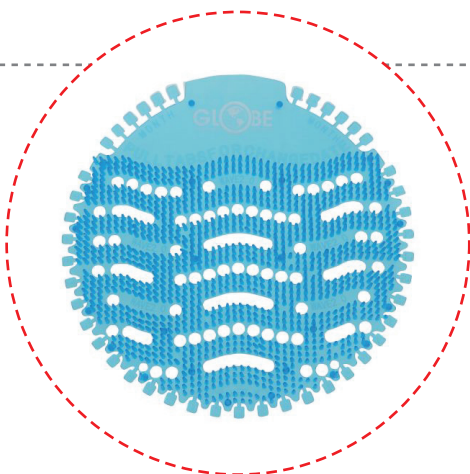
Urinal Screen Orange Mango

■ 810489

\$3.47/ea

Eliminates odours and reduces splash back, freshening the restroom. Keeps urinals smelling fresh for 30 days • Reduces slack back cutting cleaning time down by up to 50%

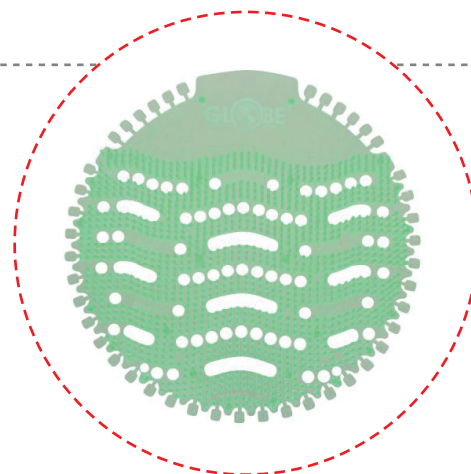
- Easy reminder system lets you know when its time to replace the screen
- To set your reminder date, simply remove the tabs when installing • Flexible translucent EVA screen allows full view of urinal drain to ensure optimal flow while trapping debris.



Urinal Screen Blue Mint

810488

\$3.47/ea



Urinal Screen Green Apple

810490

\$3.47/ea



Neoprene Glove

801643

\$6.99

Superior chemstop, neoprene over latex unsupported glove. The special neoprene latex dip incorporates the best qualities of each glove dipping compound into this glove. The neoprene over dip on the palm area adds chemical resistance to many acids, alkalies, oils and solvents. The natural rubber latex layer gives this glove its excellent flexibility and comfort. Heavyweight 30 mil thickness. Flock-lined to absorb perspiration and for easy on and off. CFIA approved for food handling. Applications include car automotive, maintenance, food handling, chemical processing and degreasing.



Wet Floor Sign English/French

827448

\$11.85

Folding design for convenient storage or transport on Janitor Cart.



Yellow Cellulose Sponge

826833

\$2.59

Ideal for cleaning dishes, stoves, porcelain, countertops, pots, and for bathroom purposes.



Goggles

812642

\$7.99

Soft, lightweight PVC frame
Four cap vents provide
indirect ventilation Fog free lens.



Wire Brush with Scraper

802445

\$11.43



Gel Hand Sanitizer 500 ml

812234

\$5.99



Hand Washing Station 3 in 1

829002

\$525.00

Includes 1 each 500LCD 5 gallon Camtainer, 1 Riser, 1 paper towel roll holder and soap dispenser, 1 easy serve dispenser. Bring hygiene and sanitation wherever you need it with Cambro mobile handwash solutions.



CamKiosk® Hand Sink Cart

829004

\$4199.00

Run hot or cold water for up to 70 hand washings, Includes double sink, 10-gallon freshwater and 14-gallon wastewater bins, plus hand soap dispenser and paper towel roll holder. Foot pedal model (shown here) runs cold water only.

Nitron



nitron₂
COLD DRAFT

Gas Module



Nitron by Bunn Leasing Options Available

MEET NITRON

Keg-free design makes Nitron the ideal platform for delivering authentic Cold Brew taste without the need for a complex or lengthy brewing process.

GAS MODULE

Compatible with any Nitron model, this module purifies the surrounding air to provide an unlimited supply of gas for beverages, and removes the need for high-pressure tanks or nitrogen generators.



www.bunn.com/nitron

At 20 servings a day this machine can pay for itself in 2 months! Ask us how!



Ventless
Heat Recovery
Condensate
Removal

Champion®
The Dishwashing Machine Specialists

DH-6000T-VHR High Temperature Hood Type Dishwashing Machine 916495

Call For Pricing

Leasing Options Available

Standard Features

Factory authorized startup | Ventless Heat Recovery | HMI-Operator Touch Screen Interface | On-Board Service Diagnostics | Field Convertible-single to three, or three to single phase | Sleep Mode-All internal heaters shut off after 4 hours idle | Door Interlock-locks door closed during the vent fan cycle | Built-in booster configured to ensure 180° rinse | Field convertible from straight to corner operation | Dual NSF listed as both a dishwasher and potwasher | Rinse Sentry-ensures 180° F final rinse | Auto start-starts unit when hood is closed | Single point electrical connection | High efficiency 2 HP pump | Self draining pump | Automatic tank fill | Automatic drain valve-drains wash tank when power is off | PRV (Mounted Pressure Reducing Valve) | 4 selectable cycles | 27" (686 mm) extended clearance.



Photo is for general visual representation only. Please refer to specifications for the latest detailed product information.

Specifier Statement

Specified unit will be Champion model DH-6000T-VHR, ventless, high temperature, high-hood type dishwashing machine. Features HMI controls, Rinse Sentry, Auto Start, Dirty Water Indicator, Delime notification, up to 40 racks/hour, 0.73 US gals/rack (2.76 liters/rack, 0.61 imp. gals/rack) 1 year parts and labor warranty.

Options & Accessories

- ☐ **New** built in detergent and rinse aid pumps
- ☐ Two point electrical connection (field installed)
- ☐ Drain Water Tempering Kit (unmounted)
- ☐ Racks
 - ☐ Peg
 - ☐ Flat
- ☐ Corner operation splash baffle
- ☐ **New** champion ION scale prevention system

Champion Industries, Inc., 3765 Champion Blvd., Winston-Salem, NC 27105,
Tel: 336/661-1556 Fax: 336/562-4618

2674 N. Service Road, Jordan Station, Ontario, Canada LOR ISO
Tel: 800/263-5798 Fax: 905/661-1979

www.championindustries.com



Stay Cool with True

Bar Refrigeration



TBR & TDR Series | Phase Two Product Introductions



Phase Two | Model Options

- Family | Lengths

TBR – True Bar Ref. – 32" | 36" | 84" | 92" | 108"

TDR – True Draft Ref. – 32" | 36" | 60" | 72" | 84" | 92" | 108" |

- Type

Pass Thru – 36" | 60" | 84" |

- Refrigeration System Side

Left Side & Right Side Cooling Systems





**Restaurant
Supply Ltd.**

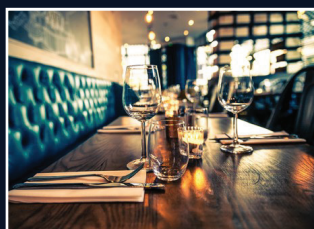


New Cleaning Standards are Coming!

There will be new cleaning standards in the restaurant & hotel industry, disinfecting & sanitizing will be at the top of the list!

Our Ultra Fogger while teamed up with our clinically proven formula EnviraMist Solutions is simple to use and will help protect your employees & your customer from 99.999% of all harmful viruses & bacteria!

Ecofriendly | 100% Biodegradable | Non-corrosive | No Rinse or Residue | Kills 99.999% of viruses, bacteria & molds | No Special Training required | No PPE Personal Protection Equipment Required | EnviraMist can be sprayed mopped & fogged without harmful reactions | No Need for multiple disinfectants



Includes : UltraFogger, 4-4 Litres EnviraMist Solution, Funnel, Healthy Premises Sticker & Fogging Instructions, BONUS 6-950 ml EnviraMist Solution

**More Info
Call Today!**



PACKAGE SPECIAL

Contact Stop Restaurant Supply for Pricing



10" Commercial Immersion Blender

810742

\$255.00

Designed and Engineered to handle your tough blending jobs. This 300 Series NSF® Certified Commercial Immersion Blender features a 10" removable blending arm with s-shaped blade to blend everything from smoothies, to sauces, soups and so much more. The quiet, yet powerful, DC motor with 2 speeds (11,000 and 18,000 RPM,) is powerful enough to handle difficult blending with ease, including dough. A convenient wall mount accessory is included for easy storage when not in use.

Robot Coupe Food Processor

826303

Call us for pricing

Cutting, slicing, and grating ingredients for a dozen dishes is a time-consuming process, which can be counterproductive in a busy commercial kitchen. Robot Coupe's R2NCLR combination food processor lets you tackle almost limitless food prep options at a fraction of the time it takes to do manually. This fast and efficient commercial food processor comes with a 3-quart-sized clear plastic batch bowl, which is the perfect size for processing small batches of ingredients or mixing multiple ingredients when making dips, sauces, and marinades. The clear and transparent material of the bowl and the lid allows you to see everything that's going on while the combination food processor is working and stop the machine when the ingredients have reached your desired consistency or coarseness. Equip your staff with a reliable commercial food processor now! Slice down your prep time with the Robot Coupe R2NCLR with 3 qt. combination food processor. Product features:

- Motor base unit with on-off and pulse switches • Plastic cutter bowl with handle • Stainless steel S blade
- Continuous feed unit with discharge plate • One(1) medium 5/64" • (2mm) grating plate • One (1) 5/32" (4mm) slicing plate • 2-1/2 qt., 120V/60/1, ETL, UL, 1/2 hp.

